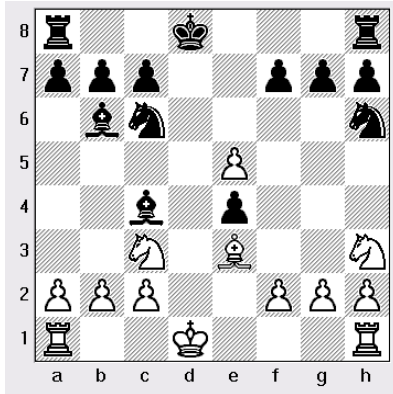


Name: _____

Spring 2012 Section: _____ Grade: _____

Beginner



Castling

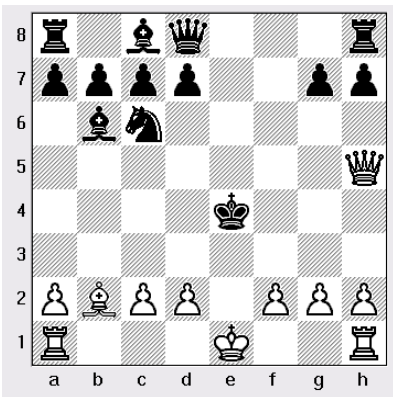
(White to move)

Please circle the correct answer:

Which one is a legal move for castling?

- A) Castling in the kingside (0-0)
- B) Castling in the queenside (0-0-0)
- C) Both kingside and queenside castling are not legal

Level 1
Novice



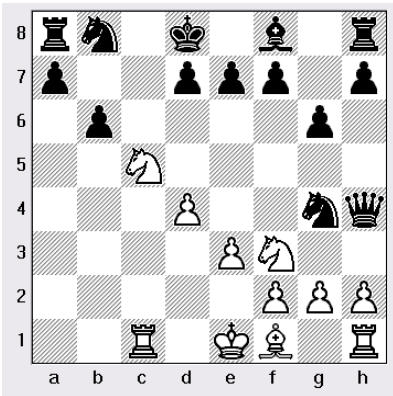
Checkmate in One Move

(White to move)

Please circle the correct answer:

- A) Move Queen from square h5 to square e5 (Qe5+)
- B) Move pawn from square f2 to square f3 (f3+)
- C) Move Queen from square h5 to square f3 (Qf3+)

Level 2
Intermediate



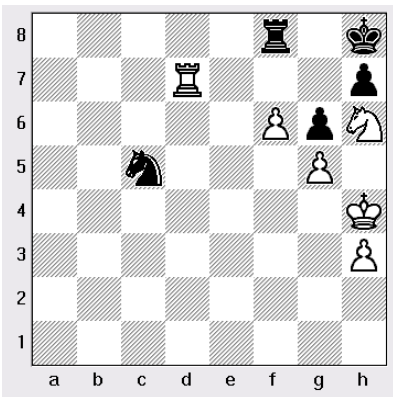
Checkmate in Two Moves

(White to move)

Please write your answer in algebraic notation:

- 1. _____
- 2. _____

Level 3
Advanced



Checkmate in Three Moves

(White to move)

Please write your answer in algebraic notation:

- 1. _____
- 2. _____
- 3. _____