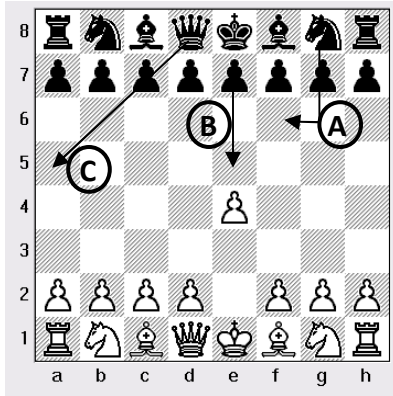


Beginner



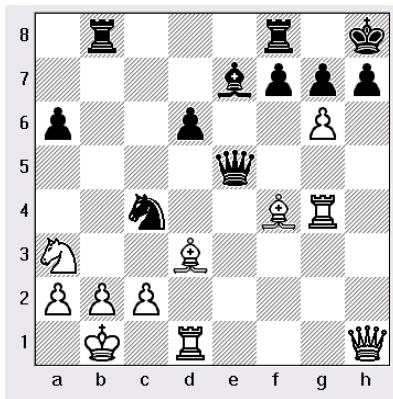
Black to Move

Please circle the correct answer:

Which one is not a legal move for black?

- A) Move Knight from square g8 to square f6 (Nf6)
- B) Move pawn from square e7 to square e5 (e5)
- C) Move Queen from square d8 to square a5 (Qa5)

Level 1
Novice



Checkmate in One Move

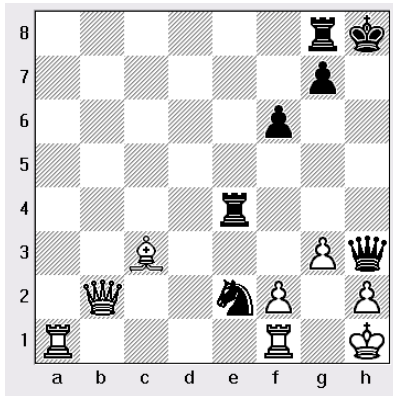
(Black to move)

Please write your answer in algebraic notation:

1. _____

Note: If you do not know algebraic notation, you may circle the piece to move and draw an arrow to show the final position

Level 2
Intermediate



Checkmate in Two Moves

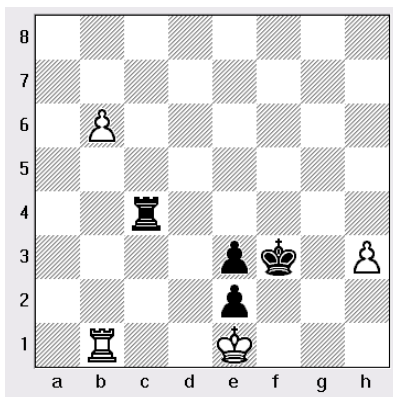
(Black to move)

Please write your answer in algebraic notation:

1. _____

2. _____

Level 3
Advanced



Checkmate in Three Moves

(Black to move)

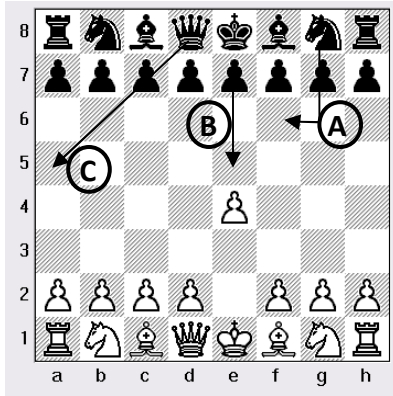
Please write your answer in algebraic notation:

1. _____

2. _____

3. _____

Beginner



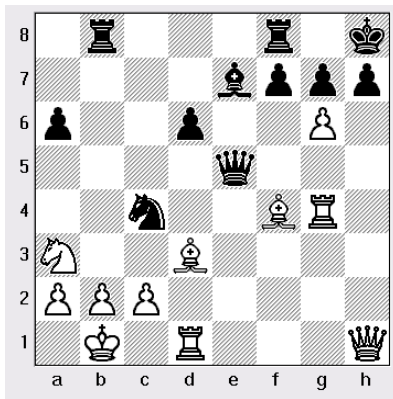
Black to Move

Please circle the correct answer:

Which one is not a legal move for black?

- A) Move Knight from square g8 to square f6 (Nf6)
- B) Move pawn from square e7 to square e5 (e5)
- C) Move Queen from square d8 to square a5 (Qa5)**

Level 1
Novice



Checkmate in One Move

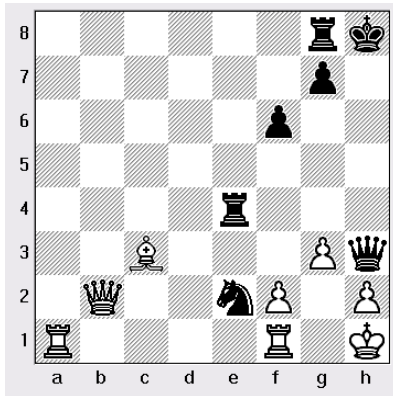
(Black to move)

Please write your answer in algebraic notation:

1. Qxb2++

Note: If you do not know algebraic notation, you may circle the piece to move and draw an arrow to show the final position

Level 2
Intermediate



Checkmate in Two Moves

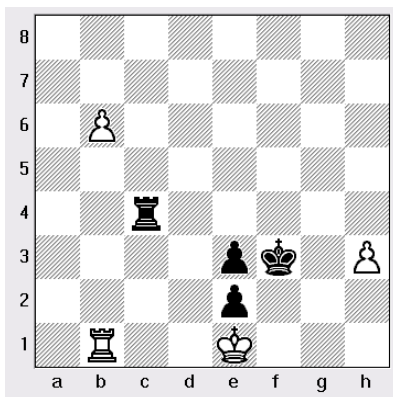
(Black to move)

Please write your answer in algebraic notation:

1. Rh4
2. gxh3 Qf3++

Another Solution	
1.	Rh4
2.	Bxf6 Qxh2++

Level 3
Advanced



Checkmate in Three Moves

(Black to move)

Please write your answer in algebraic notation:

1. Rc8
2. b7 Rg8
3. b8=Q Rg1++

Another Solution	
1.	Rc6
2.	b7 Rg6
3.	b8=Q Rg1++